

# ICS Gateway Settings

First thing you need is all of your information about your IP address's

To do this, go to the run command and type in "command" with no quotes then hit enter.

Once you get a command prompt (Black MS DOS style screen) type in "ipconfig /all" minus the quotes, and then hit enter. You will get something similar to this, depending on your setup.

```

C:\> Command Prompt
Microsoft Windows XP [Version 5.1.2600]
(C) Copyright 1985-2001 Microsoft Corp.

C:\Documents and Settings\Administrator>ipconfig /all

Windows IP Configuration

    Host Name . . . . . : christine
    Primary Dns Suffix . . . . . :
    Node Type . . . . . : Unknown
    IP Routing Enabled. . . . . : Yes
    WINS Proxy Enabled. . . . . : No

Ethernet adapter Don:

    Connection-specific DNS Suffix . :
    Description . . . . . : HP EN1207D-TX PCI 10/100 Fast Ethernet Adapter
    Physical Address. . . . . : 00-10-B5-85-86-2F
    Dhcp Enabled. . . . . : Yes
    Autoconfiguration Enabled . . . . : Yes
    IP Address. . . . . : 192.168.1.100
    Subnet Mask . . . . . : 255.255.255.0
    Default Gateway . . . . . : 192.168.1.1
    DHCP Server . . . . . : 192.168.1.1
    DNS Servers . . . . . : 127.0.0.1
    NetBIOS over Tcpip. . . . . : Disabled
    Lease Obtained. . . . . : Monday, June 07, 2004 12:19:37
    Lease Expires . . . . . : Monday, June 07, 2004 12:24:37

PPP adapter Family Video:

    Connection-specific DNS Suffix . :
    Description . . . . . : WAN (PPP/SLIP) Interface
    Physical Address. . . . . : 00-53-45-00-00-00
    Dhcp Enabled. . . . . : No
    IP Address. . . . . : 209.254.41.40
    Subnet Mask . . . . . : 255.255.255.255
    Default Gateway . . . . . : 209.254.41.40
    DNS Servers . . . . . : 127.0.0.1
    NetBIOS over Tcpip. . . . . : Disabled

C:\Documents and Settings\Administrator>

```

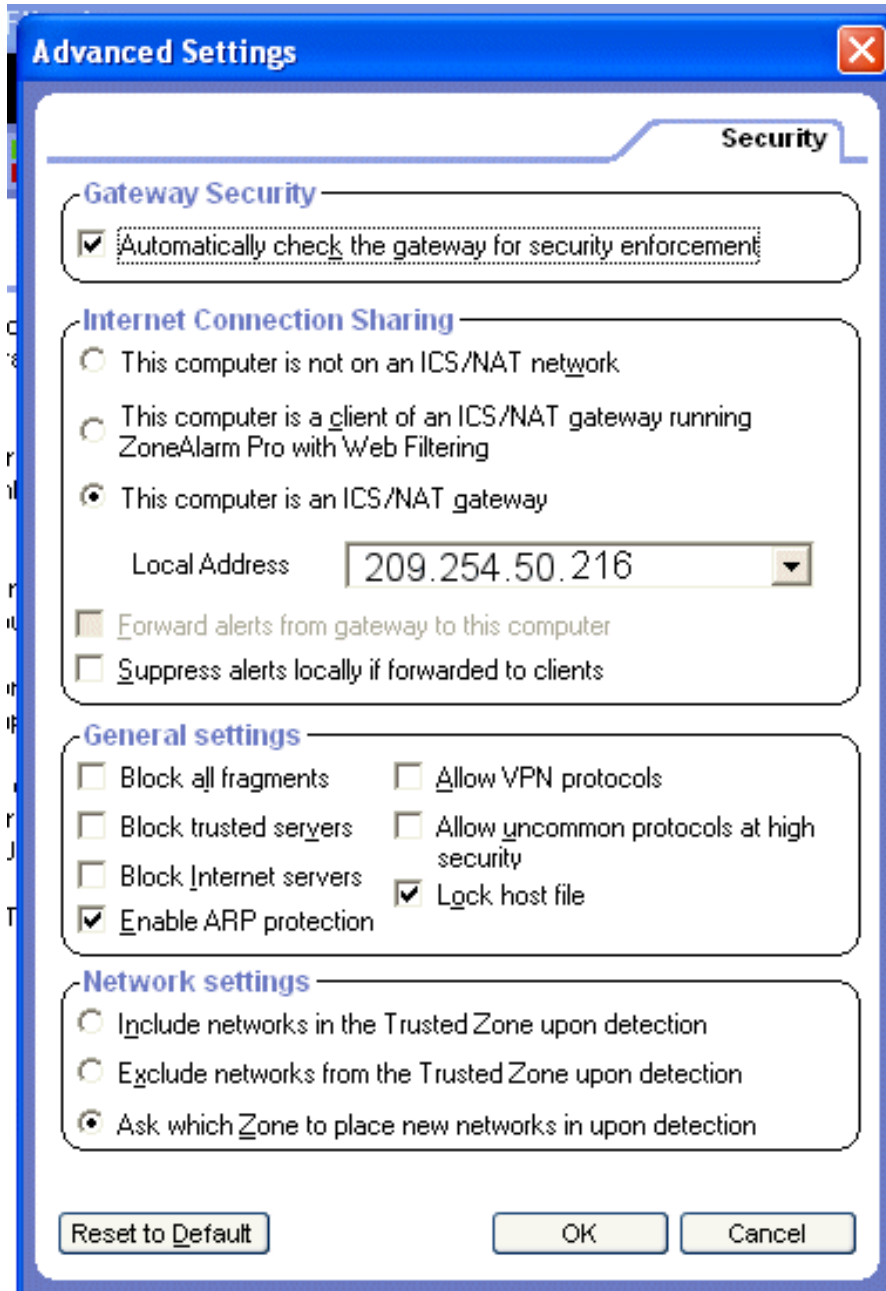
In this list you need either the Local IP address, or the Default Gateway IP address. (IP address is the numbers in the form of xxx.xxx.xxx.xxx)

If you have no routers connected between your computer and your modem then you will need the Local Address. If there is anything between your computer and the modem then you will need the default Gateway Address

Be aware that some of the new broadband modems are also small routers so for them you may need the Default Gateway IP address.

To get to the place to setup the ICS settings in ZoneAlarm, open up the interface and click the word wirewall on the left

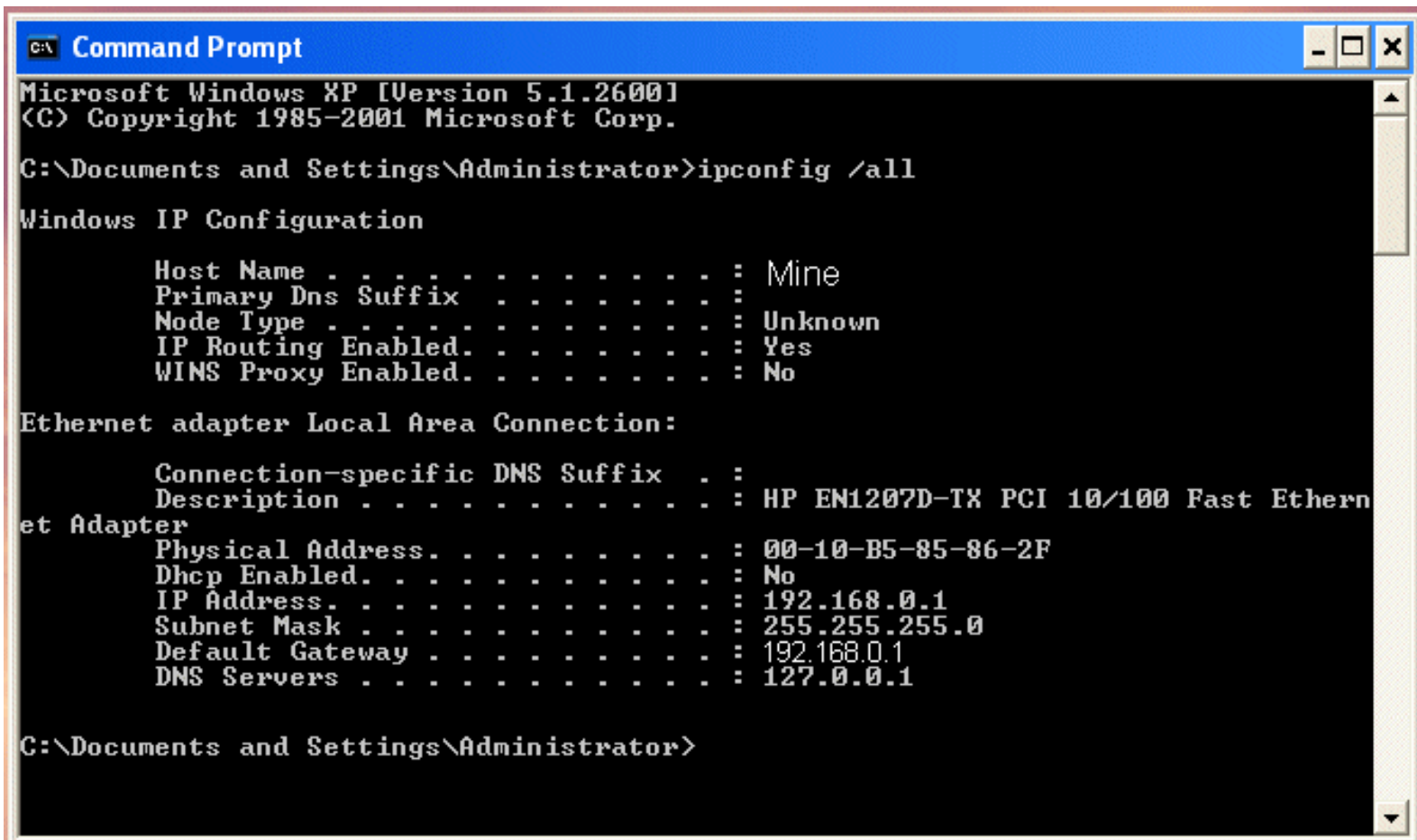
side, then click the tab along the top that says main. Then toward the bottom of the page you will see a button that says Advanced. Click it. Now you will see the box below.



Check the box that says "This computer is an ICS /NAT Gateway and then select the Local IP Address from the drop down list

## *ICS Client settings*

The same things apply. First run ipconfig /all on your client machine as above.

A screenshot of a Windows XP Command Prompt window. The title bar reads "C:\ Command Prompt". The window content shows the following text:

```
Microsoft Windows XP [Version 5.1.2600]
(C) Copyright 1985-2001 Microsoft Corp.

C:\Documents and Settings\Administrator>ipconfig /all

Windows IP Configuration

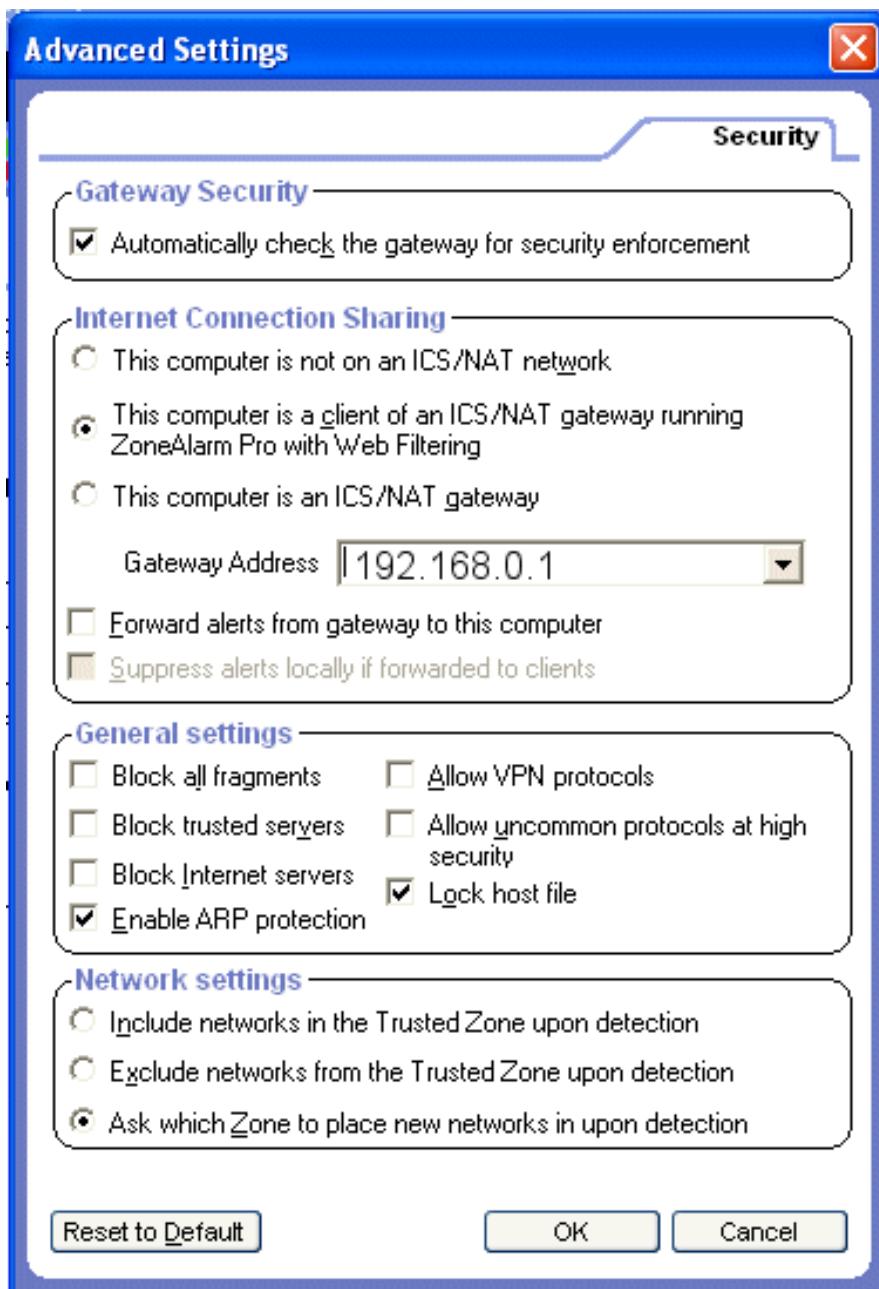
    Host Name . . . . . : Mine
    Primary Dns Suffix . . . . . :
    Node Type . . . . . : Unknown
    IP Routing Enabled. . . . . : Yes
    WINS Proxy Enabled. . . . . : No

Ethernet adapter Local Area Connection:

    Connection-specific DNS Suffix . :
    Description . . . . . : HP EN1207D-TX PCI 10/100 Fast Ethernet Adapter
    Physical Address. . . . . : 00-10-B5-85-86-2F
    Dhcp Enabled. . . . . : No
    IP Address. . . . . : 192.168.0.1
    Subnet Mask . . . . . : 255.255.255.0
    Default Gateway . . . . . : 192.168.0.1
    DNS Servers . . . . . : 127.0.0.1

C:\Documents and Settings\Administrator>
```

Now that you have it you need your Gateway IP address if this is the Client machine.



Check the box that says "This computer is a client of an ICS /NAT Gateway and then select the Gateway IP Address from the drop down list